

THE ALDE & ORE ESTUARY TRUST

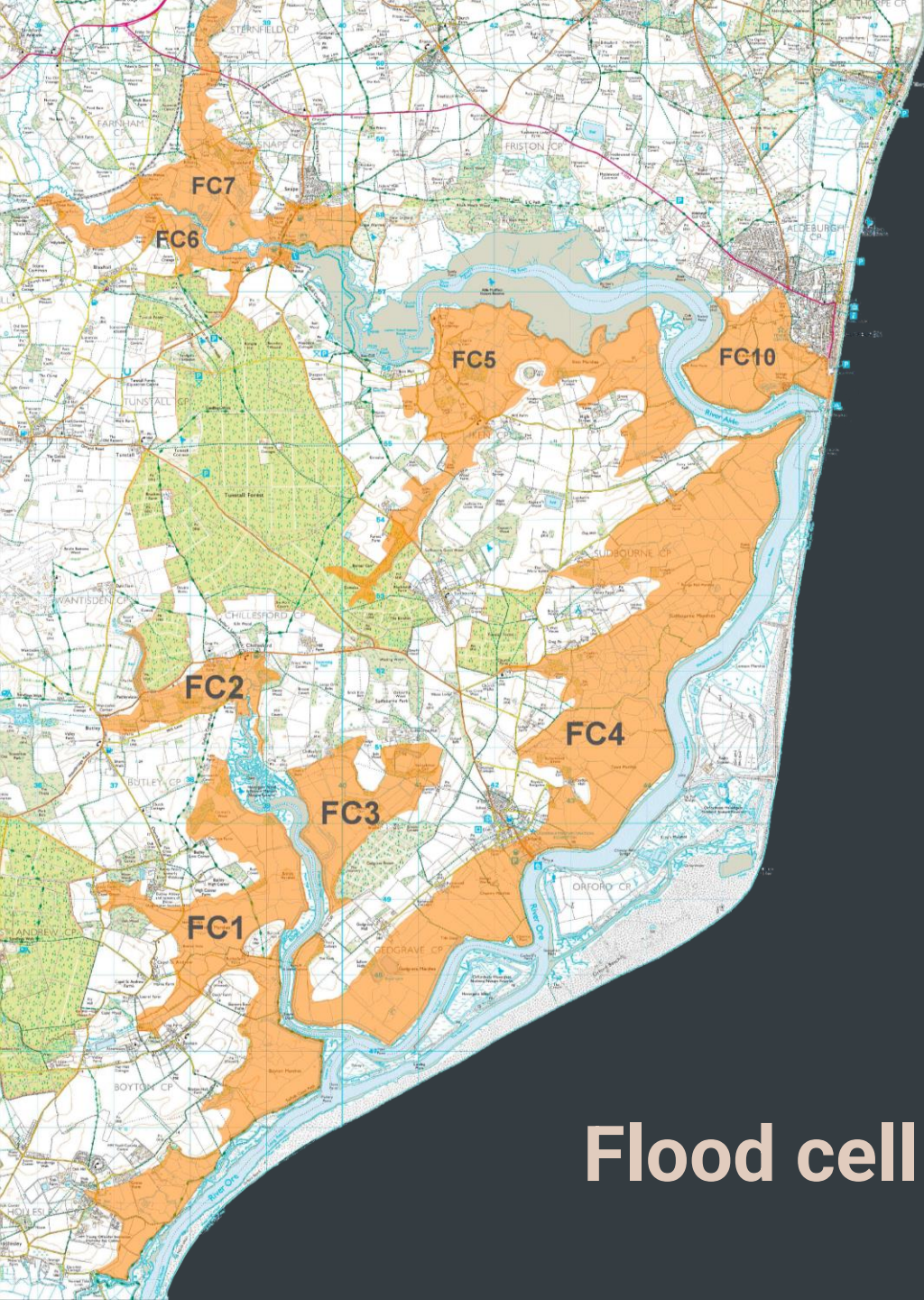


**The Alde & Ore Estuary Trust (AOET) is a charity, registered with the
Charity Commission, registration number 1155115**

We aim to provide, preserve, maintain and improve river defences and flood protection, always taking into account the conservation and protection of the natural environment, flora, fauna, features of historic interest and the landscape and beauty of the Alde and Ore.

More specifically

- The Trust raises funds to enhance and upgrade the flood defences in the Alde and Ore estuary which will provide medium to long term flood resilience for local communities.
- We are the charity responsible for fundraising to enable preparation and submission of business cases to the Environment Agency (EA).
- And then, for raising enough money to make up the shortfall between awards from central and local government and the costs of the project.
- To this end we have been financing the East Suffolk Water Management Board ((ESWMB) formerly the East Suffolk Internal Drainage Board (ESIDB)) to enable them to apply for government grants.



Flood cell map

Every winter, and now sometimes at other times of the year, the estuary communities experience storm surges.

These surges are becoming more frequent.

It is only a matter of time before significant flooding occurs again.

What are the benefits of preventing flooding?

Over 1,000 properties are better protected.

Leisure and tourism revenue exceeding £100 million per annum, creates jobs.

The tidal flood defence frontage of 44 kilometres long provides access to 101 kilometres of public and permissive paths and internationally designated wildlife habitats.

59 freshwater abstraction points irrigate over 2,630 hectares of vegetable and high value crops vital for food security.

3,335 hectares of arable tidal plain grazing marshes of national importance are protected.

A number of roads, sewerage treatment plants and electricity substations in the flood plain will be protected.



Eastern England is...



Driest region
in the UK



Seriously
water stressed



Highest forecast
growth outside London

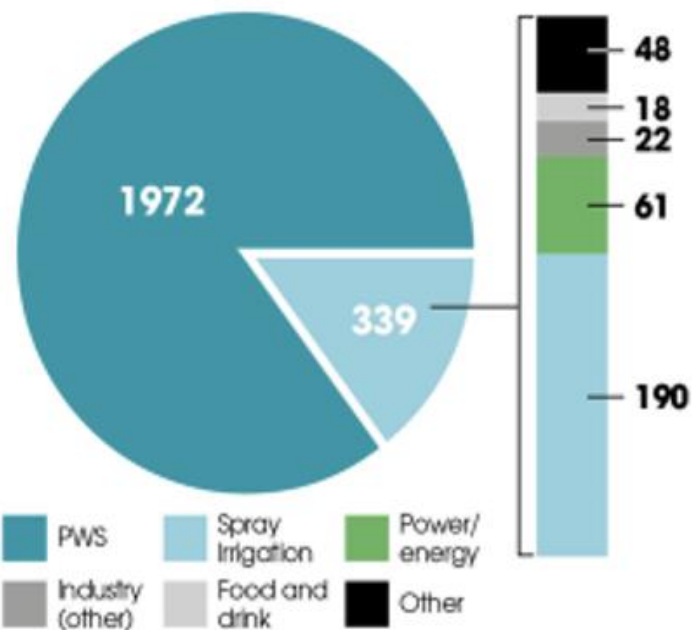


Leading agricultural
producer



Internationally important
environments

How water is used in Eastern England today



Average daily water
consumption in our
region is currently
estimated at

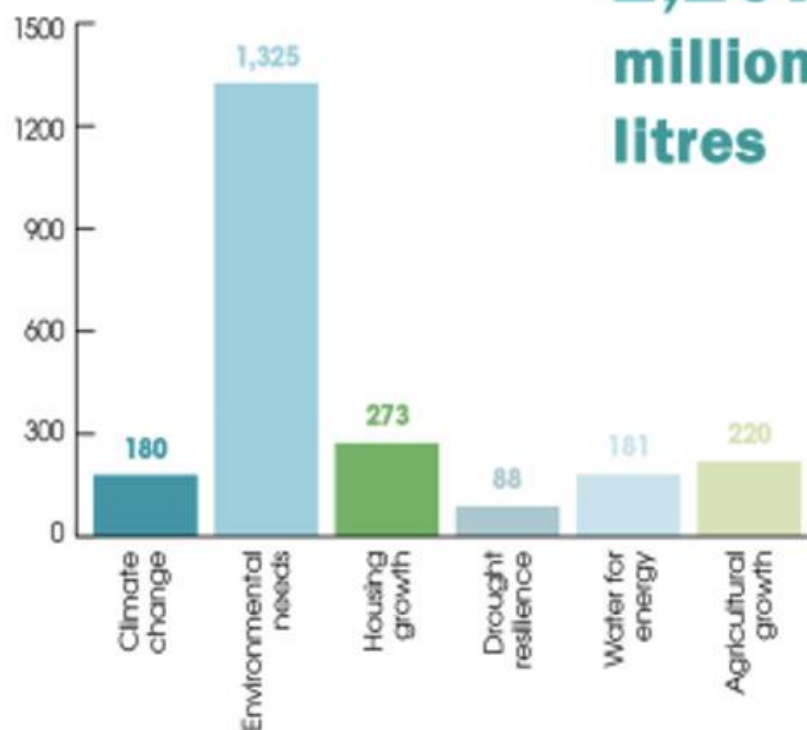
2,311
million litres



Potential additional water needs in 2050

WATER RESOURCES EAST

2,267
million
litres



Valuable water resources in the estuary flood plain

Upgrading the river walls will:

- protect and enable substantial, currently unused, groundwater to be stored on farms
- protect the production of high quality local food whilst reducing over-abstracted ground water resources
- create the potential for wetland farming (paludiculture) whilst locking in carbon, cleaning the air and water
- and provide much needed freshwater bird breeding and over-wintering habitat.

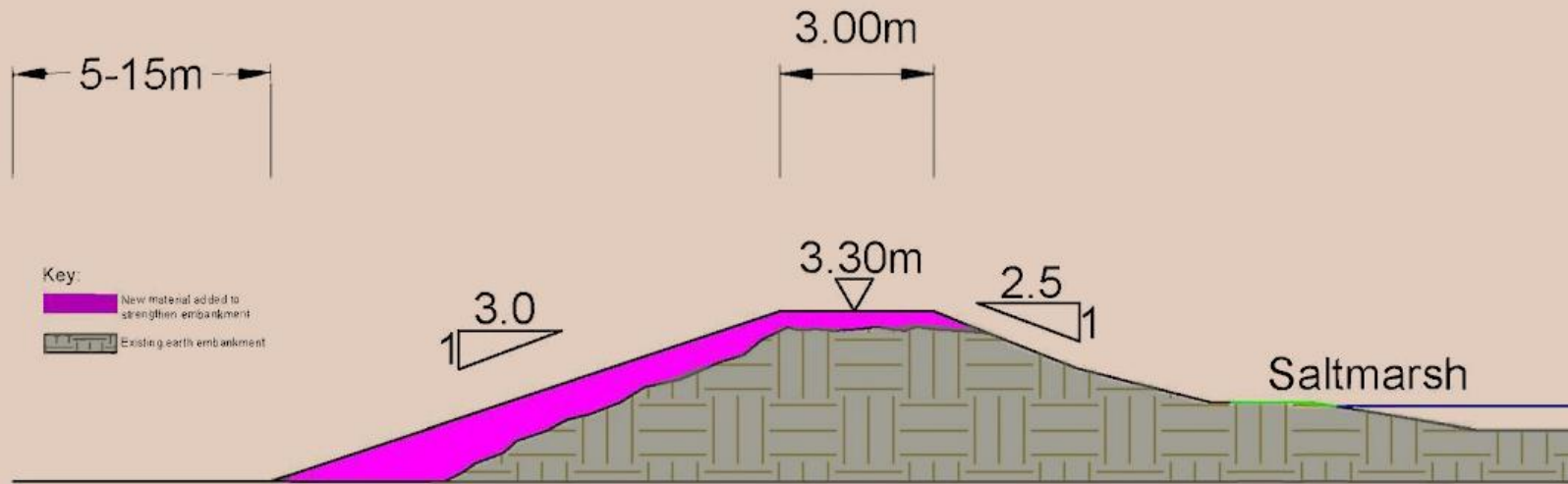


A mosaic of habitats

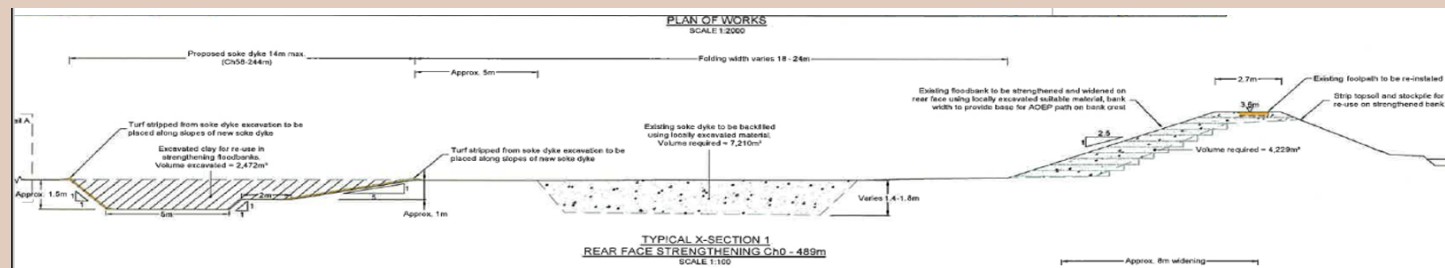
- Upland arable farming
- Marsh pasture
- River walls
- Saltmarsh provides natural flood mitigation by reducing and damping down wave action that could erode tidal defences over time.
- Mud flats
- Estuary

Landward Face

River Face



Indicative design cross section - Embankment crest heights vary according to Flood Cell / location





THE ALDE & ORE ESTUARY TRUST





THE ALDE & ORE ESTUARY TRUST



How donated funds are used by the ESWMB to gain government funding

ESWMB grant awarded to produce:

- cost estimates for the whole estuary project to improve the river wall embankments throughout the estuary
- Business Case for the Upper Estuary
- an updated Business Case for the Upper Estuary
- The EA has given a grant of £99k for the BC for the Lower estuary. It is likely that a further grant from the Trust will be needed to complete the BC.



THE ALDE & ORE ESTUARY TRUST 

The benefits

- Economic: Every £1 invested in flood defence upgrades benefits the local economy by over £4 (as adjusted for Net Present Value) over the next 25 years, because homes and businesses in each town and village, farmland and fresh water reserves and underground aquifers, along the whole estuary will be protected. This is a positive return on investment for both the local and UK economy.
- Enjoyment: Everything including accessibility along the extensive network of footpaths, to bird watching and sailing will continue safely, thanks to this work. The internationally renowned concert hall at Snape Maltings (a building of Grade II* status) will be protected - excellent news for both local and UK economy as it attracts artists and audiences from all over the world.
- Health and well being: Protection of enjoyable activities and the increased access to the walls for pushchairs and mobility vehicles will have a positive impact on both physical and mental health.
- Environment: The estuary lies within the Suffolk Coast & Heaths Area of Outstanding Natural Beauty (AONB). It is a wetland site of international importance (RAMSAR convention), Special Area of Conservation (SAC) and Natura 2000 Special Protection Area. The whole estuary is a designated Site of Special Scientific Interest (SSSI). In addition it sits on the East Atlantic Highway, a wild bird superhighway (see <https://community.rspb.org.uk/ourwork/b/rspb-england/posts/a-bid-to-make-the-uk-s-wild-bird-superhighway-a-new-world-heritage-site>). The RSPB is bidding to make this migration highway a new UNESCO World Heritage site.

Bridging the £20m gap:

Environment Agency requires a community contribution towards the cost of any major project.

For the Upper Estuary community contribution, the AOET received a grant from the Garfield Weston Foundation.

Donations from philanthropic individuals

The Andren Legacy

£3m donation from farmers and landowners

Events

Charitable Trusts and Foundations

Local government

Other central government

Businesses and Utility companies



THE ALDE & ORE ESTUARY TRUST 

Are we in step with the government?

The EA's stated strategy is that:

- “by 2025 we will have created more climate resilient places and infrastructure, by ensuring the nation is prepared for flooding, coastal change and drought
- by 2025 we will be a stronger leader on climate adaptation and resilience, encouraging others to act now on the climate emergency and invest in adaptation
- by 2025 we will be ready for bigger, more frequent incidents and will support those at risk to be more resilient”

The wishes of the communities could not be more aligned. The communities have been and continue to be a driving force on this project.



THE ALDE & ORE ESTUARY TRUST 

If you care about the impact a flood catastrophe would have on this beautiful estuary, please donate today and become part of the efforts to improve vital flood defences. Together our work will preserve this unique place and protect its environment, wildlife, people and businesses. And safeguard its long term future.

DIRECT INTO OUR BANK ACCOUNT

BY STANDING ORDER

JUST GIVING

BY TEXT

BY POST

GIFT AID

THE GIFT AID SCHEME

If you are a UK taxpayer, the value of your donation to us is increased by 25% through the Government's Gift Aid scheme. All you need to do is fill in the attached form and send it to us. This can increase your donation amount significantly, at no extra cost to you.

Please take a few minutes to click [here](#) and fill in the form, it will be a tremendous help to us.



THE ALDE & ORE
ESTUARY TRUST 

PRESERVE . IMPROVE . PROTECT

www.aoetrust.org